

GrecoShield 100E

Elastomeric Waterproof And Protective Coating For Walls

Description

GrecoShield 100E is a ready to use, single component water based acrylic polymer based elastomeric protective and decorative coating for concrete and plastered walls. The dry film of **GrecoShield 100E** is tough, flexible with long term weathering resistant.

It is available in a off white , specific decorative colours on request.

Uses

GrecoShield 100E is suitable for use on all type of new and existing structures. The product is specially developed for giving a elastomeric, monolithic seal to cover and protect the concrete surface. To cover up and waterproof hair-line cracks present on old concrete structure and plastered walls.

GrecoShield 100E provides protection against weathering, aging and ultra violet radiation.

Advantages

- Cost effective, economical to use.
- Single component ready to use.
- Protect and waterproof various types of building materials.
- Flexible, bridges hairline cracks
- Anti-carbonation, excellent barrier to carbon dioxide, chloride ions, oxygen and water

Typical Properties

Appearance	: Thixotropic coating
Specific gravity	: 1.30 ± 0.05 kg/lit.
Drying time (at 30°C)	: 30 min (Surface Dry) 60 min (Hard Dry)

Application

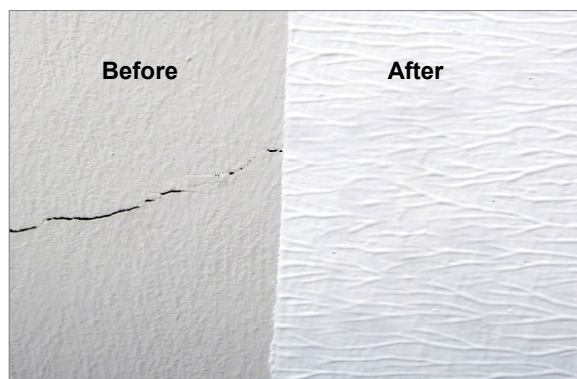
Surface Preparation

Substrate must be structurally sound, dry and clean and smooth or steel trowel finish. Cement laitence, mould release agent, curing compound, oil, grease or any loose particle which may impair bond must be removed using effective means. Cracks, honeycombs and surface irregularities shall be repaired with appropriate repair methods and products.

For plaster wall, use high pressure water jetting to clean the substrate.

Mixing

Mechanical mixing using a low speed drill fitted with a wing profile mixing paddle is recommended. Hand mixing should be avoided.



Method of Application

Primer the surface with **GreBond AC** dilute 1 : 2 with water and allow to dry. For porous surface more than 1 coat of primer is required.

Apply **GrecoShield 100E** onto clean and well prepared substrate using roller, brush or airless spray.

For sealing cracks and waterproof the concrete or plastered walls, apply minimum 2 coats of **GrecoShield 100E** by roller, brush or airless spray. Do not apply the second coat until the first coat has fully dried.

Embed glass fiber mesh into the wet film of the 1st. coat in areas where require reinforcement.

Coverage

Typical coverage is 0.25kg/m² per coat to achieve a DFT of 50μ

Coverage will vary with surface profile and porosity of substrate.

Cleaning

Clean tools and equipment immediately after use with water.

Packaging

GrecoShield 100E is available in 20kg pail.

Shelf Life

GrecoShield 100E has a shelf life of 12 months when stored in original packing in a cool and dry environment.

Health & Safety

Avoid skin and eye contact. Wear suitable protective clothing, masks and gloves while handling product. In case of accidental contact with eye, wash with plenty of water and seek medical advice.

Note:

Use the leaflet as a guide for the use of this product concerned. The information given is in accordance with the latest technical developments. However, we cannot accept responsibility for any work carried out with our materials as we have no control over the method of application used or the condition of the site involved.

Last updated by KH/Jan/2024

